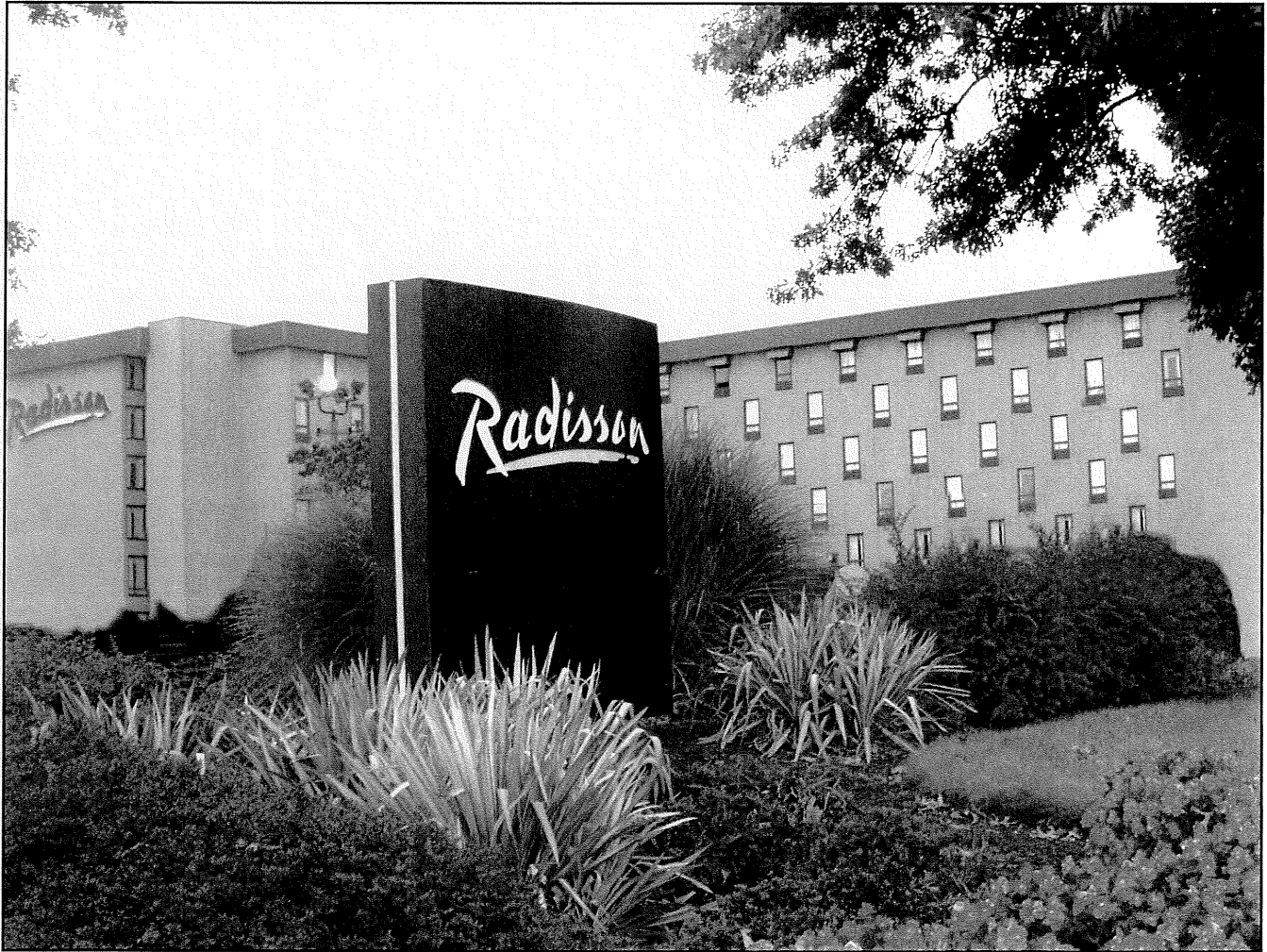


KVL Audio Visual Services

Your connection to successful business meetings



Radisson®

HOTEL PHILADELPHIA NORTHEAST

Call KVL at (215) 638-8300 Ext.162

or Call Direct (215) 638-3933

FAX (215) 638-4069

U.S. Route 1 at Old Lincoln Highway, Trevose, PA 19053-6894

One call to KVL connects you with...

a limitless inventory of state-of-the-art audio visual equipment and a staff of dedicated professionals ready to put it all to work for you – on time and on budget!

KVL personnel will deliver the equipment to your meeting room and set it up so that everything is checked out, ready for use.

A KVL representative will be happy to assist you in planning and coordinating your function, whether it be a small meeting or a large convention.



The Radisson Hotel Philadelphia Northeast has selected KVL Audio Visual Services as the official source of audio visual rental equipment, sound systems, stage lighting and professional technical services for guests using the Hotel's meeting facilities.

KVL maintains an office in the Hotel complete with equipment, management staff and technicians. In addition, our staff monitors an after hours pager should you need assistance or additional equipment.

Because KVL's on-site staff functions as a department of the Hotel, they are totally familiar with the unique aspects of our facilities and will offer a consistently superior service to ensure the quality and effectiveness of your meeting.

For your convenience, all charges for audio visual equipment and services will be posted on your master account. If a master account is not established with the Hotel, payment is required at the time of your event by check, American Express, Visa or Mastercard.

This brochure contains the most frequently requested audio visual equipment. If your audio visual requirements are extensive or out of the ordinary, we suggest you contact the KVL office in the Hotel to discuss your needs.

Thank you for choosing the Radisson Hotel Philadelphia Northeast and KVL Audio Visual Services.

*–The Management of the
Radisson Hotel Philadelphia Northeast*



○ Video

Video Packages:

1/2" VHS Player/ 27" Color Monitor Package	\$200
Add a 2nd 27" Monitor to above packages	135
VHS Video Player / Recorder	65
3/4" U-Matic Video Player	135
DVD Player	75
Color LCD Data Projector (SVGA,XGA,SXGA)	from 450
Other Data Projectors	call for quote
VHS Camcorder with Tripod	190
Video Distribution Amplifier	40

○ Projection

Projector Packages: Includes up to 8' Screen

Overhead Projector Package:

Overhead Projector with Skirted Stand and Screen \$80

Slide Projector Package:

Includes Projector, 4-8" Zoom Lens, Remote Control, Skirted Stand and Screen 100

Ballroom Slide Projector Package:

Includes above with 8-12" Zoom Lens and Bright-Light Module and 10' Screen 175

Overhead Projector	50
Acetate Roll with Brackets/Markers	20
High Intensity Overhead Projector	85
35mm Slide Projector w/4-8" Lens and Tray	45
Wireless Remote Control	30
Bright-Light Module	25
8-12" Zoom Lens	30
Extra 80-Slot Slide Tray	3
Skirted Projector Stand	20

○ Screens

	Front	Rear
5' & 6' Tripod Screen	\$25	
7' & 8' Tripod Screen	35	
10' Cradle Screen	70	
6' X 8' Fast-Fold Screen		
With Dress Kit	155	170
7.5' X 10' Fast-Fold Screen		
With Dress Kit	175	190
9' X 12' Fast-Fold Screen		
With Dress Kit	200	215
Other Screens and Dress Kits available.		

○ Audio

Mono Cassette Recorder	\$45
Stereo Cassette Recorder	60
Multi-Disc CD Player	70
Podium, Table-top, or Floor Microphone	25
Lapel Microphone	30
Boundary Microphone	35
Wireless Hand-held or Lapel Microphone	125
4-Channel Mixer	40
6-Channel Mixer	60
16-Channel Mixer (mono/stereo)	140
Press Mult Box	125
8-Channel 100' Audio Snake	50
Direct Box	20
Microphone Boom Stand	15
10" Self-powered Speaker with Stand	80
Rack Sound System Package (2-Speakers, Power Amp & Mixer)	300
Portable Stereo with CD and Cassette	60
House Sound Patch Fee	25

Mixer required for events using 2 or more microphones and/or audio sources. Operator required for extensive set-ups.

○ Lighting

Follow-Spot	\$110
-------------	-------

Due to the highly technical nature of stage lighting, please contact your KVL representative with your lighting requirements.

○ Meeting Aids

Flipchart Package:	\$30
<i>Includes Hardback Easel, Pad & Marker</i>	
Hardback Easel	16
Flipchart Pad	10
Flipchart Markers (each)	2
Tripod Display Easel	10
Whiteboard with Markers	30
Corkboard	30
10' X 16' Draping Panel with Hardware	125
Speakerphone	45
Audio Teleconference Unit	100

○ Computers & Office Equipment

Personal Computers and Laptops	Call for Quote
Computer Monitors	Call for Quote
Laser Printer	Call for Quote
Wireless Mouse	\$40
Color LCD Data Projector (SVGA, SXGA)	from 450
Other Data Projectors	call for quote
VGA Extension Cables	from 15

○ Accessories

Skirted Projector Stand	\$20
Skirted 34" Cart	20
Skirted 42" Cart	20
Skirted 54" Cart	20
Laser Pointer	40
Single AC Extension Cord	5
Quad AC Extension Cord	10
Multiple-outlet Power Strip	10

○ Labor

Set-up/Breakdown (per technician)	\$45/hr.
Operator (4-hour minimum)	\$55/hr.

*A service charge will be applied to all basic equipment orders.
Hourly labor charges will be applied to more complicated orders.
A KVL representative will outline these charges on an individual basis.*

○ Labor Schedule

7am-7pm / Monday-Saturday	Straight Time
Over 8 hours of straight time	Time and a half
7pm to Midnight / Monday-Saturday	Time and a half
7am to Midnight / Sunday	Time and a half
12 Midnight to 7am/7 days a week	Double Time
Holidays	Double Time

For rate information on any equipment or services not listed, please contact our representative. All Rates subject to appropriate sales tax. Prices subject to change without notice.